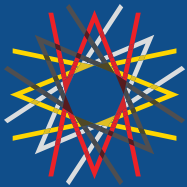


2026



**UNIVERSITY OF MARYLAND
STRATEGIC PARTNERSHIP
MPOWERING THE STATE**

RESEARCH | ECONOMIC DEVELOPMENT | EDUCATION | SERVICE

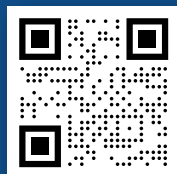


UNIVERSITY OF MARYLAND STRATEGIC PARTNERSHIP MPOWERING THE STATE

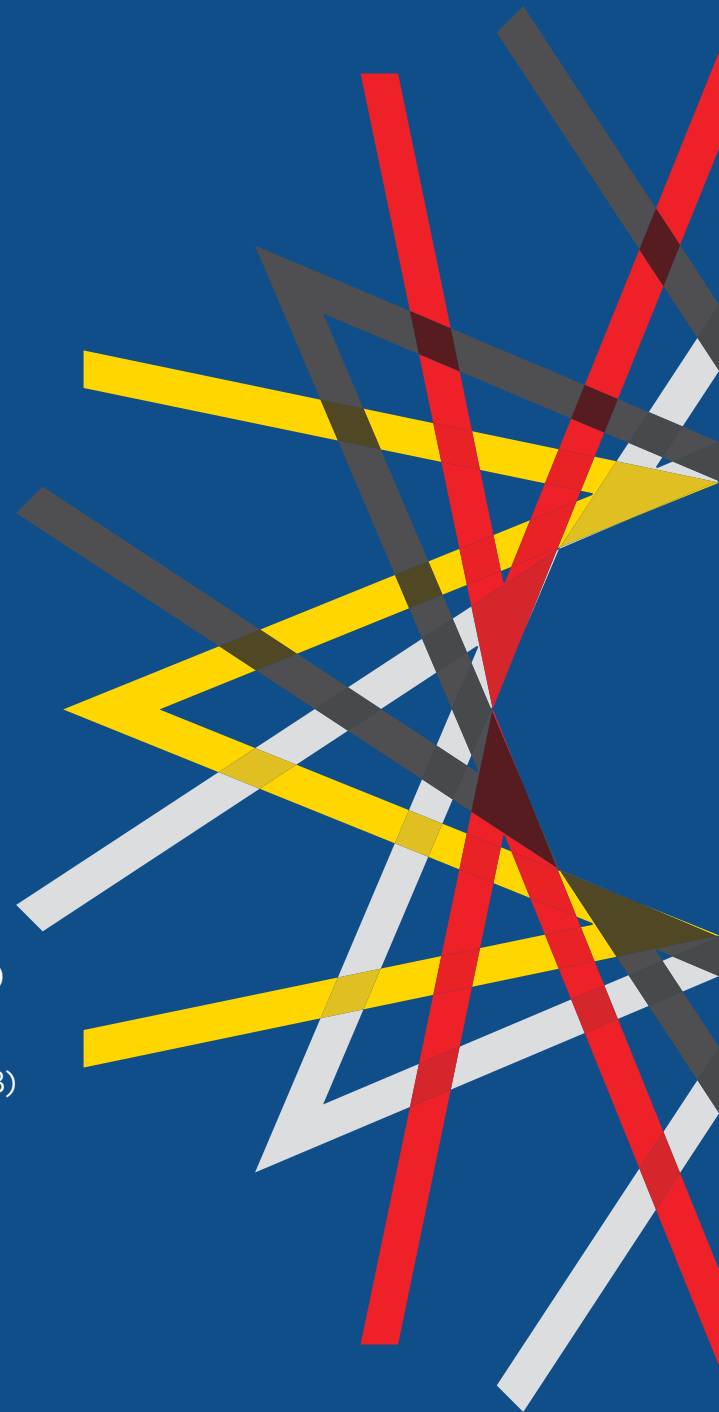
COLLABORATION. INNOVATION. IMPACT.

The University of Maryland Strategic Partnership: *MPowering the State (MPower)*

An innovative, structured collaboration that connects world-class strengths in research, technology, and education at the University of Maryland, Baltimore (UMB) and the University of Maryland, College Park (UMCP).



Scan the QR code or visit [**mpower.maryland.edu**](https://mpower.maryland.edu)
to learn more about our impact and our future.



RESEARCH AND DISCOVERY

Igniting innovation and high-impact discoveries through focused, strategic collaborations.

MPower Professorships

COHORT 4: ANNOUNCED 2025

Prestigious award recognizes, enables, and fosters strong faculty collaborations.



Shuo Chen, PhD, MSPH, MS
University of Maryland
School of Medicine



Michael Cummings, PhD
College of Computer,
Mathematical, and
Natural Sciences



Julie Dunning Hotopp, PhD
University of Maryland
School of Medicine



Utpal Pal, PhD, MSc
College of Agriculture and
Natural Resources



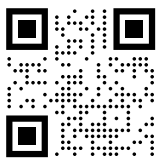
Mihai Pop, PhD, MSE
College of Computer,
Mathematical, and
Natural Sciences



Fadia Shaya, PhD, MPH
University of Maryland
School of Pharmacy



Richard J. Traub, PhD
University of Maryland
School of Dentistry



Scan for more information on **MPower Research initiatives.**

WHAT'S
NEW

University of Maryland Research Rankings

No. 9

**Among All Public U.S.
Research Universities**

For Research and
Development Spending

No. 14

In the Nation

For Research and
Development Spending

*Data: National Science Foundation, Higher
Education Research and Development Survey,
Fiscal Year 2024, Released December 2025*

**\$1.5
BILLION**

**FY24 UMB and UMCP
Combined Research
Expenditures**

FEATURED RESEARCH INITIATIVE

University of Maryland Institute for Health Computing

*Collaborating to improve the health
of Maryland residents and advance
the state's biotech industry.*

SIX RESEARCH AREAS

- > Applied Artificial Intelligence
- > Bioinformatics
- > Immersive Visualization
- > Real-World Evidence and Adaptive Clinical Trials
- > Population Health
- > Therapeutic Drug Discovery

In partnership with the
**University of Maryland
Medical System** and
Montgomery County

135

**Faculty, Staff, Postdocs,
and Students**

20

**Student Interns and
Trainees**
in summer 2025

1

**Faculty Member
Spin-Out Company**
and

7

**Provisional Patents,
Trademarks, or
Copyrights Submitted**

20+

Industry Partnerships
in life sciences and
biotech sectors

2

**Government Agencies
Co-Located On-Site**
*National Institutes of Health/
National Heart, Lung, and
Blood Institute and U.S. Food
and Drug Administration*

Data as of December 2025

FEATURED RESEARCH INITIATIVE

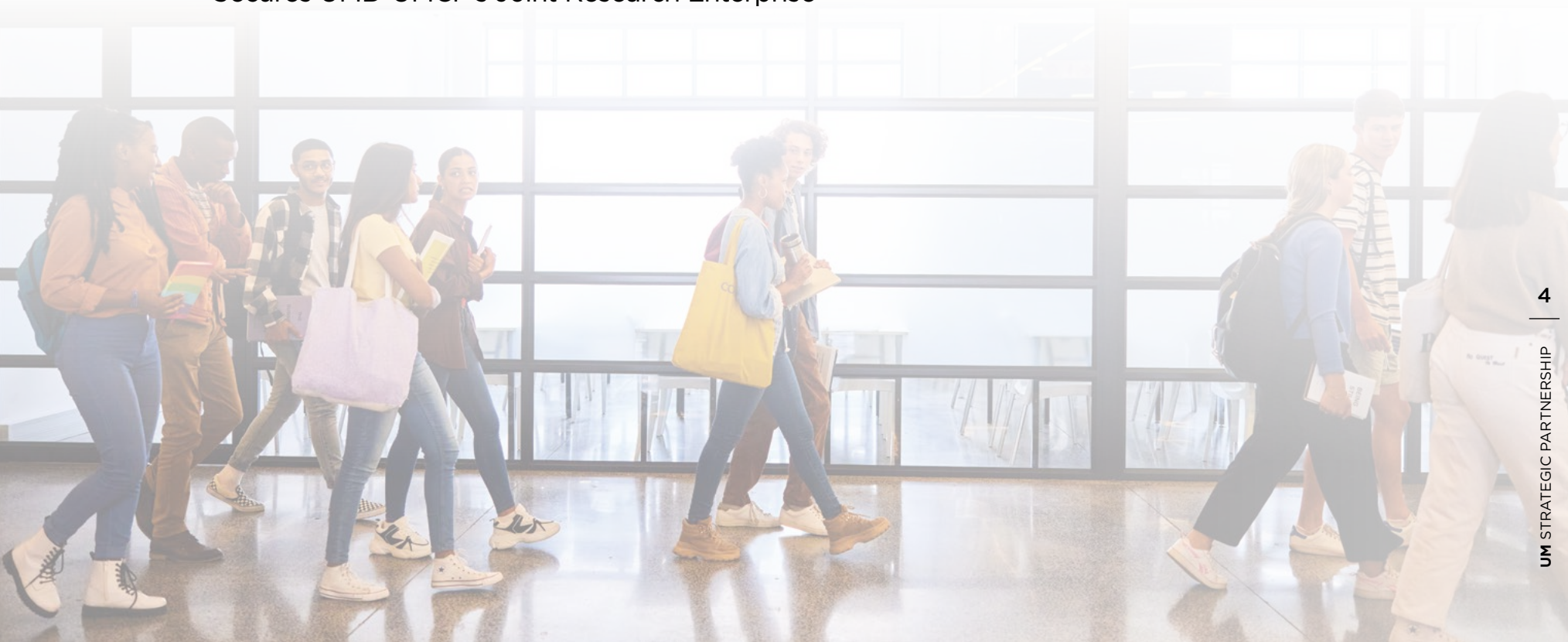
LAUNCHED
FALL 2025

MPower Early Scholars Investment Fund

Protecting and strengthening the next generation of researchers.

Targeted research support for PhD students, postdocs, and junior faculty:

- Provides short-term funding to protect and strengthen future researchers impacted by cuts to research
- Advances Maryland's future competitiveness
- Secures UMB-UMCP's Joint Research Enterprise



FEATURED RESEARCH INITIATIVE

Engineering and Medicine Partnership

Uniting disciplines to tackle health issues, drive medical innovation, and educate future leaders.

NEW

Edward and Jennifer St. John Center for Translational Engineering and Medicine

- > Hub for innovation and collaboration
- > Addresses real-world medical needs using a medical and engineering perspective
- > Enhances education opportunities, joint research, and faculty access
- > Co-locates faculty for synergy and impact

NEW

BS-MD Dual-Degree Pathway*

- > Bridges engineering, mathematics, data science, and medicine
- > Creates seamless pathway to train the next generation of physician-engineers
- > First cohort enrolled in eight-year program

**This collaboration also includes the College of Computer, Mathematical, and Natural Sciences.*

Additional Academic Collaborations

- > Bioengineering Capstone Design Course
- > Joint Graduate Fellowship in Bioengineering
- > Research and clinical experiences for undergraduates

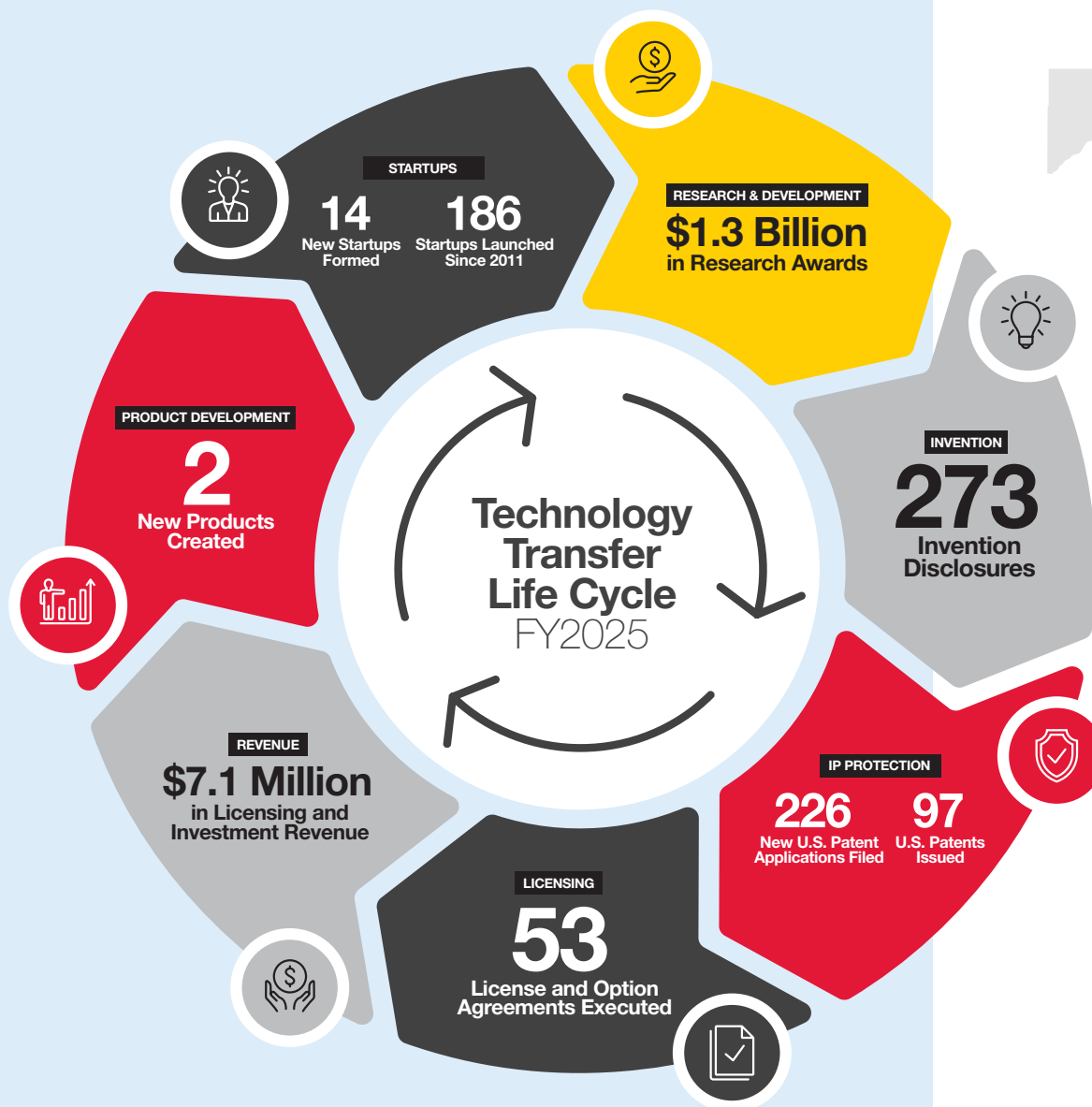
“The Edward and Jennifer St. John Center for Translational Engineering and Medicine is **where diverse minds unite**, each contributing their unique expertise, **pushing the boundaries of what's possible in medicine.**”

— Edward St. John



INNOVATION AND ENTREPRENEURSHIP

Growing innovative startups and technologies and bringing scientific discoveries to the marketplace.



University research yields discoveries with commercial potential, **creating economic impact in Maryland.**

Targeting investments to strengthen strategic and economic priorities across Maryland.

BALTIMORE FUND

Center for Maryland Advanced Ventures

Stimulates economic growth by encouraging university-created or -sponsored technology companies to locate and expand in Baltimore City.

SINCE
2017

- > 900 jobs created or retained
- > 78 direct grants and 10 investments to entities that support Baltimore's innovation ecosystem
- > Return on Investment (company-generated):
 - \$50 million in investment and grants
 - \$75 million in revenue

MARYLAND MOMENTUM FUND

A collaboration between UM Ventures and the University System of Maryland (USM)

Early-stage investment fund supports Maryland-based, USM-affiliated startup companies.

SINCE 2017

- > \$14.4 million invested in 31 companies from eight USM institutions
- > \$140 million raised from 245 unique co-investors
- > 336 new jobs created

DISCOVERY FUND

University of Maryland Center for Economic and Entrepreneurship Development

Invests in promising university-affiliated technology companies that catalyze economic development in Prince George's County and spur growth in high-technology areas.

SINCE
2022

- > Over \$2.5 million invested to date; FY25 new investments totaling \$840,000 to promising startups and strategic programs:

- RELAI
- QC82
- Causify
- Reversal Therapeutics, Inc.
- Medcura
- The Coding School's Qubit by Qubit

MEDICAL DEVICE PROTOTYPING LAB

Center for Maryland Advanced Ventures

Lab positioned within the University of Maryland School of Medicine facilitates the development of biomedical devices.

SINCE
2021

- > 25 projects reviewed
- > 6 patent applications filed
- > 3 startups created

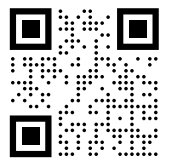
QUANTUM STARTUP FOUNDRY

University of Maryland
Center for Economic and
Entrepreneurship Development

*One of the world's first startup
incubators dedicated exclusively to
quantum commercialization, based in
College Park, just steps from IonQ.*

SINCE
2022

- > Supported over 30 quantum entrepreneurs and startups to date
- > Accelerates quantum technologies' time to market
- > Provides critical access to quantum research and educational strengths
- > Connects industry and government customers, investors, technical mentors, leading-edge research, and intellectual property with quantum-specific infrastructure: equipment, tools, and facilities



Scan for more information on **MPower Economic Development initiatives.**

Select **UM Ventures** Portfolio Companies

Mblue Labs®

IRAZÚ ONCOLOGY

NasaClip

KaloCyte

INVENTWOOD

N5 Sensors

COAPTECH

IONQ

GENE
LIFESCIENCES

ION+

MEDCURA

Secretome
THERAPEUTICS

ACADEMIC AND RESEARCH OPPORTUNITIES

Connecting resources and expanding opportunities to train the next generation.

ACADEMIC COLLABORATIONS, INITIATIVES, AND SUPPORT

- > Bioengineering Capstone Design Course
- > Bioengineering Clinical Experiences
- > BS-to-MD Dual-Degree Pathway
- > Joint Graduate Fellowship in Bioengineering
- > Master of Science in Law
- > MLAW: Undergraduate Programs in Law
- > MPower Early Scholars Investment Fund
- > Multiple Cross-Institution Academic Degree Pathways
- > Policing Partnership: Master of Professional Studies in Public Safety Leadership and Administration
- > President's Entrepreneurial Fellowship
- > Russell Brinsfield Internship Program
- > UM Scholars: Cross-Campus Summer Research
- > University of Maryland Center for Economic and Entrepreneurship Development (UMCEED)

20+
Joint Academic Collaborations

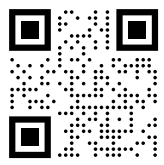
1,760
MLAW Students
in undergraduate legal studies program

24
Brinsfield Interns
from law and agriculture

1,259
Bioengineering Undergraduates
teamed with UMB clinicians

MPower Student Opportunities
AT A GLANCE

380
UM Scholars
in cross-campus summer research



Scan for more information on
MPower Academic initiatives.

Accelerating the education of Maryland's next generation through creative academic programs that attract students and meet workforce demands.

IMPACT OF *MPOWER* STUDENT PROGRAMS

In Their Own **Words**

“

*I want to be able to target problems at the root rather than working with the outcome. **By doing research, I can look at why things are happening so we can stop them before they start.***”

— **Olohitare “Abby” Abaku**, BS Public Health Science and Psychology Candidate | Class of 2026, College of Behavioral and Social Sciences and School of Public Health



“

*This experience gave me a behind-the-scenes **look at real-world legal work, and it helped me feel more confident about my post-graduation plans.** I could easily see myself doing this kind of work in the future.*”

— **Dean Costalas**, JD Candidate | Class of 2026,
University of Maryland Francis King Carey School of Law

“

*I plan to pursue a career in nursing, but research is also a passion of mine. **This program confirmed my commitment to gaining research experience while working toward a Bachelor of Science in Nursing.***”

— **Rachel Ni**, BSN Candidate | Class of 2028,
UMCP-University of Maryland School of Nursing Pathway Student



IMPACT OF *MPOWER* STUDENT PROGRAMS

In Their Own **Words**

“

I loved feeling as if I made a difference
*by developing recommendations to
be implemented in the 2026 General
Assembly session.*”

— **Urvi Chowdhury**, MD Candidate | Class of 2028,
University of Maryland School of Medicine



“

***What I most enjoyed was the creative freedom to tackle
real-world issues, gain experience with legal research,
and deepen my understanding of agricultural policy.***”

— **Isabella Trujillo**, BS Environmental Science and Policy | Class of 2025,
College of Behavioral and Social Sciences

“

***It was amazing to be able to meet a wide range
of extraordinary physicians and scientists and to
learn about their research.***”

— **Leah Han**, BS Physiology and Neurobiology | Class of 2027,
College of Computer, Mathematical, and Natural Sciences



SERVICE TO MARYLANDERS

Connecting top thinkers and a multidisciplinary lens to redefine challenges and generate solutions.

SERVICE COLLABORATIONS, INITIATIVES, AND SUPPORT

- > Agriculture Law Education Initiative (ALEI)
- > Support, Advocacy, Freedom, and Empowerment Center for Human Trafficking Survivors (SAFE Center)

2,180
Marylanders
from every county participated in 18 online and 26 in-person trainings and webinars in FY25

250+
Participants
in popular Heirs' Property Workshops focused on estate planning and property issues

Agriculture Law Education Initiative AT A GLANCE

11th
Annual
Agricultural and Environmental Law Conference held November 2025

\$2.2
Million+
in ongoing and new external funding

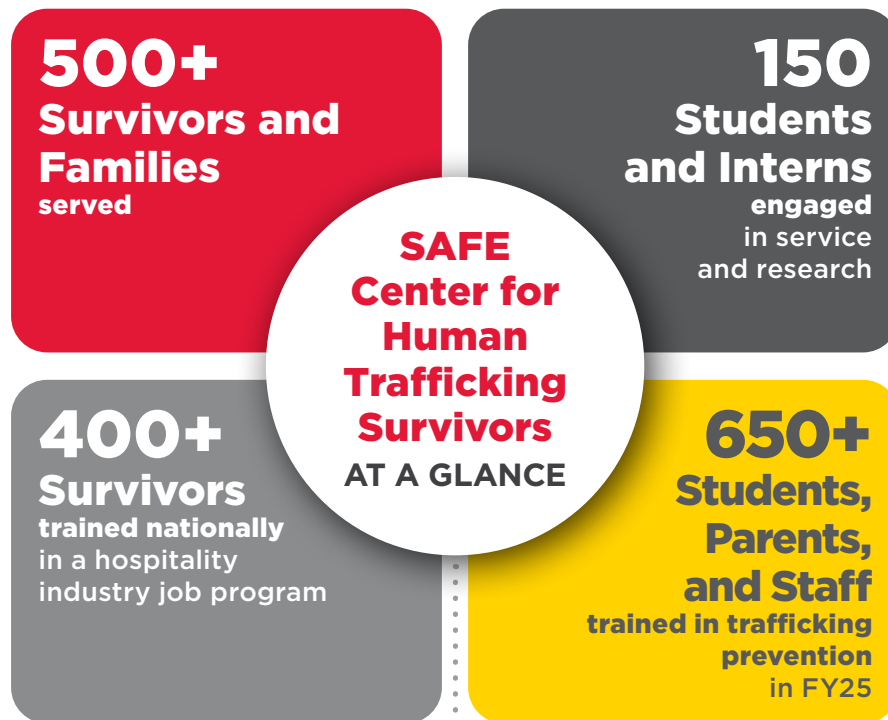
Outreach to Maryland Farmers

- > Labor Law Compliance
- > Farm Succession
- > Food Safety
- > Heirs' Property
- > Urban Agriculture
- > Climate-Smart Agriculture
- > Right-to-Farm
- > Solar Leasing
- > Agritourism

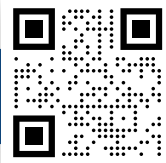
Since 2013: Educating and serving Maryland farmers by providing expert information and training to help navigate complex legal issues, regulatory compliance, and other aspects of agricultural law.



*Tackling the state's critical issues
to drive positive impact.*



Since 2016: Providing comprehensive legal, social, mental health, basic medical, and economic empowerment services to victims of human trafficking.



Scan for more information on **MPower Service to Marylanders**.

RECENT PARTNERS AND COLLABORATORS

- > Marriott International
- > American Hotel and Lodging Association Foundation
- > TISTA Science and Technology Corporation
- > Steptoe LLP
- > Maryland Hospital Association
- > Maryland Human Trafficking Task Force
- > University of Maryland Capital Region Medical Center
- > Montgomery County Human Trafficking Task Force
- > Prince George's County Human Trafficking Task Force





MPower Leadership

Bruce E. Jarrell, MD, FACS

PRESIDENT, UMB

Darryll J. Pines, PhD, MS

PRESIDENT, UMCP

JOINT STEERING COUNCIL

Peter B. Crino, MD, PhD

PROFESSOR AND CHAIR, DEPARTMENT
OF NEUROLOGY, UNIVERSITY OF MARYLAND
SCHOOL OF MEDICINE, UMB

Blakely R. Pomietto, EdD

ASSISTANT PRESIDENT AND CHIEF OF STAFF, UMCP

Jennifer King Rice, PhD

SENIOR VICE PRESIDENT AND PROVOST, UMCP

Roger J. Ward, EdD, JD, MSL, MPA

PROVOST AND EXECUTIVE VICE PRESIDENT, UMB





UNIVERSITY OF MARYLAND
STRATEGIC PARTNERSHIP
MPOWERING THE STATE

FOR MORE INFORMATION, CONTACT:

Adrianne M. Arthur, EXECUTIVE DIRECTOR

410.706.5279 | aarthur@umaryland.edu | mpower.maryland.edu